



One Chagrin Highlands
2000 Auburn Drive
Suite 200
Beachwood, Ohio 44122

Ph. 216-378-7650
Fax 866-794-5756
www.sotaris.com

Your Workplace Safety Partner

SOTARIS...*CONFINED SPACE SERVICES*

Sotaris was founded by dedicated professionals who shared a vision for bringing safety consulting to an unprecedented level. Having assisted numerous Fortune 500 clients with their safety protocols, and successfully completing hundreds of wide-ranging compliance projects, Sotaris personnel are uniquely positioned to amortize their experiences with all clients.

Sotaris offers specialized services in the following areas:

- Arc Flash
- Confined Space
- Fall Protection
- Facility Audits
- Lockout/Tagout
- Electrical Safety
- Emergency Planning
- Safety Training

OUR MISSION STATEMENT

Sotaris is committed to the *profession* of safety. Our clients will receive objective and informed consultation, based upon our experience, knowledge of safety protocols **and an appreciation of our client's prevailing workforce demographics, budgets and ability to implement our recommendations effectively.** At all times, Sotaris shall function as an extension to our client's internal resources, and in so doing, constantly be focused on those issues most critical to our client and the protection of their workers and property.



PROJECT SCOPE

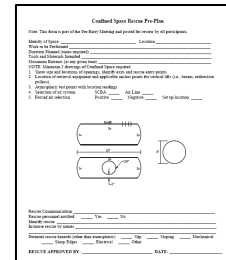
As part of a Confined Space Program project Sotaris will provide the following services:

- Perform a Confined Space Assessment in accordance with ANSI Z117.1 Safety Requirements for Confined Spaces along with 29 CFR 1910.146, OSHA's Permit-required Confined Space Standard, to determine which spaces should be designated as PRCS and Non-PRCS; as well as spaces that can be reclassified.
- Review our findings and compare those to the spaces currently identified as PRCS and Non-PRCS within your facility
- Develop a report detailing our findings as well as development and refinement of a Confined Space listing and hazard assessment for each respective space within each respective facility.
- Determine level and means of confined space identification and cite where improvements may be needed. Sotaris can provide the generic "DANGER - Confined Space" and "DANGER - Permit Required Confined Space" signage as part of this project. See associated costs section for details.

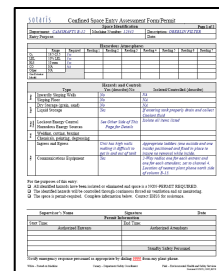


- For each Confined Space the following information will be documented:
 - The identity and location of the confined space.
 - Work and/or reasons for entry into the space
- For each Permit Required Confined Space, the following information will be documented
 - The identity and location of the confined space.
 - Work and/or reasons for entry into the space
 - The classification of potential hazards associated with each space as noted in OSHA 1910.146 and ANSI Z117.1 (i.e. atmospheric, mechanical, entrapment, engulfment, etc).
 - The responsibilities of each authorized Attendant, Entrant, and Supervisor
 - Rescue and emergency response provisions

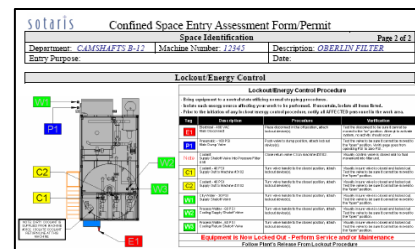
- Development of space specific Rescue Plans for each space that requires special planning considerations. These plans would include, retrieval systems, monitoring equipment, number of persons, communication techniques, ventilation equipment (set-up and locations), PPE required, and other items as needed. These will be laminated and mounted at the respective PRCS. Sotaris will provide the installation of these graphics at each respective space.



- Development of space specific Entry Procedures that detail the steps that will need to be taken prior to entry into a Permit-Required Confined Space. Some of these items include; pre-entry checklists, hazard identifications, air monitoring requirements, ventilation techniques, lockout procedures, acceptable entry conditions, rescue/emergency contact information, methods of re-classifying space as non-PRCS, to name a few. These will be laminated and mounted at the respective PRCS. Sotaris will provide the installation of these graphics at each respective space.



- Graphical and/or photographic representation of the space that includes isolation points, entry points, exit points, rescue equipment set-up, air monitoring locations, and other items that may be required to insure proper understanding of procedures. This would be incorporated into the laminated Rescue Plans and Entry Procedures for the respective PRCS.



- Development of unique energy identification tags for each isolation point detailed within the Entry Procedures. These tags will be 3"x3" in size, laminated, and be mounted at each energy isolation point listed within the lockout/energy control portion of the Entry Procedure. These tags will be color coded and include a unique alpha numeric identifier along with the energy type and magnitude.
- Additionally Sotar... will review and make recommendations regarding current overall written Confined Space and Permit Required Confined Space Programs and Training.



In addition to Sotar... resources, this project will require the combined efforts of The Client's, safety personnel, confined space authorized employees (attendants, entrants, supervisors and rescue personnel), and maintenance workers, in order to insure that the resulting documents are beneficial to all persons that will be using them. *It will not be necessary that The Client's, personnel be dedicated to this, only that they are available for the initial start up, review meetings and questions during the course of the project.*

Sotar... will review with The Client those methods which worked most successfully at other facilities where Sotar... has provided industrial safety services.

Thank you for this opportunity to provide you information on our Confined Space Program Services. If you should have any questions or concerns, please do not hesitate to contact us at your convenience.



To find out more about our services please contact us today to see how we can help!



One Chagrin Highlands
2000 Auburn Drive, Suite 200
Beachwood, Ohio 44122

Ph. 216-378-7650
Fax 216-378-7505
[safety@sotar...com](mailto:safety@sotar...)
[www.sotar...com](http://www.sotar...)